



SKALA
Sinergi dan Kolaborasi untuk Akselerasi Layanan Dasar
Kemitraan Australia - Indonesia



Kementerian Keuangan
Republik Indonesia



Kementerian Dalam Negeri
Republik Indonesia



BAPPENAS
Kementerian Perencanaan Pembangunan Nasional/
Badan Perencanaan Pembangunan Nasional

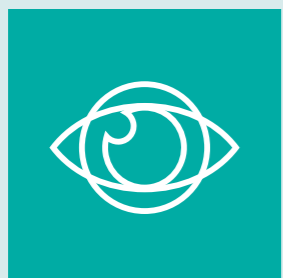


Australian Government

BASIC SERVICES FOR PEOPLE WITH DISABILITIES IN INDONESIA

Source: Regsosek 2022 processed using SEPAKAT in August, 2024

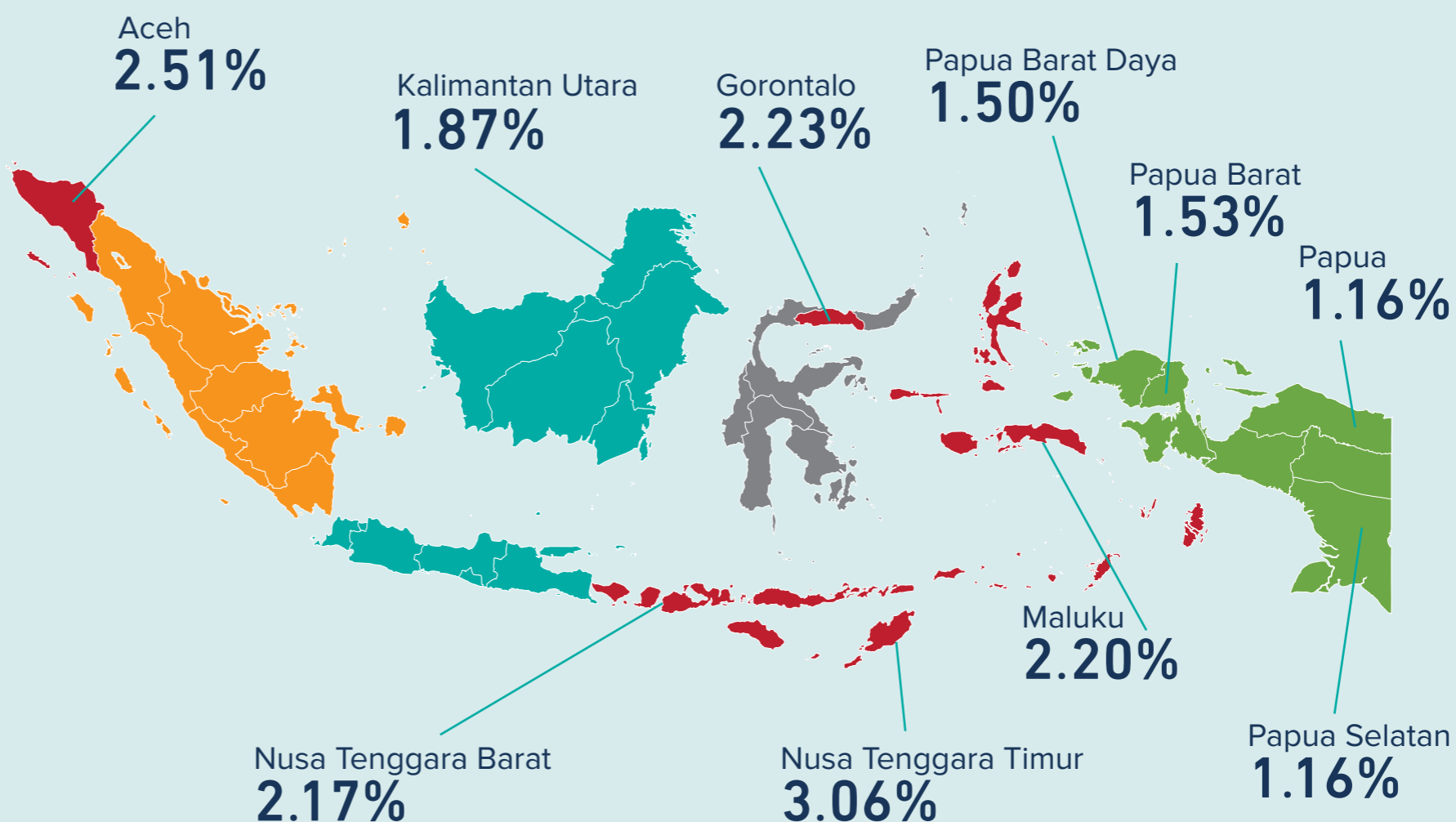




OVERVIEW

% of People with Disabilities as Part of the Population

Indonesia has a significant population of people with disabilities, totaling 5 million—equivalent to the population of Oman



Sumatra
1.93%

Java
1.80%

Bali and Nusa Tenggara
2.39%

Kalimantan
1.84%

Sulawesi
2.16%

Papua
0.95%



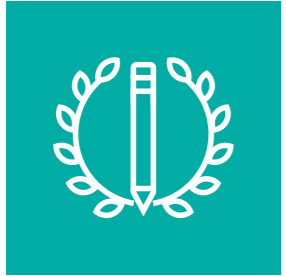
Nearly
5 million

Indonesians have disabilities

Nearly
55%
are women

Up to **20%**
of people with disabilities
are among the poorest
10% of the population

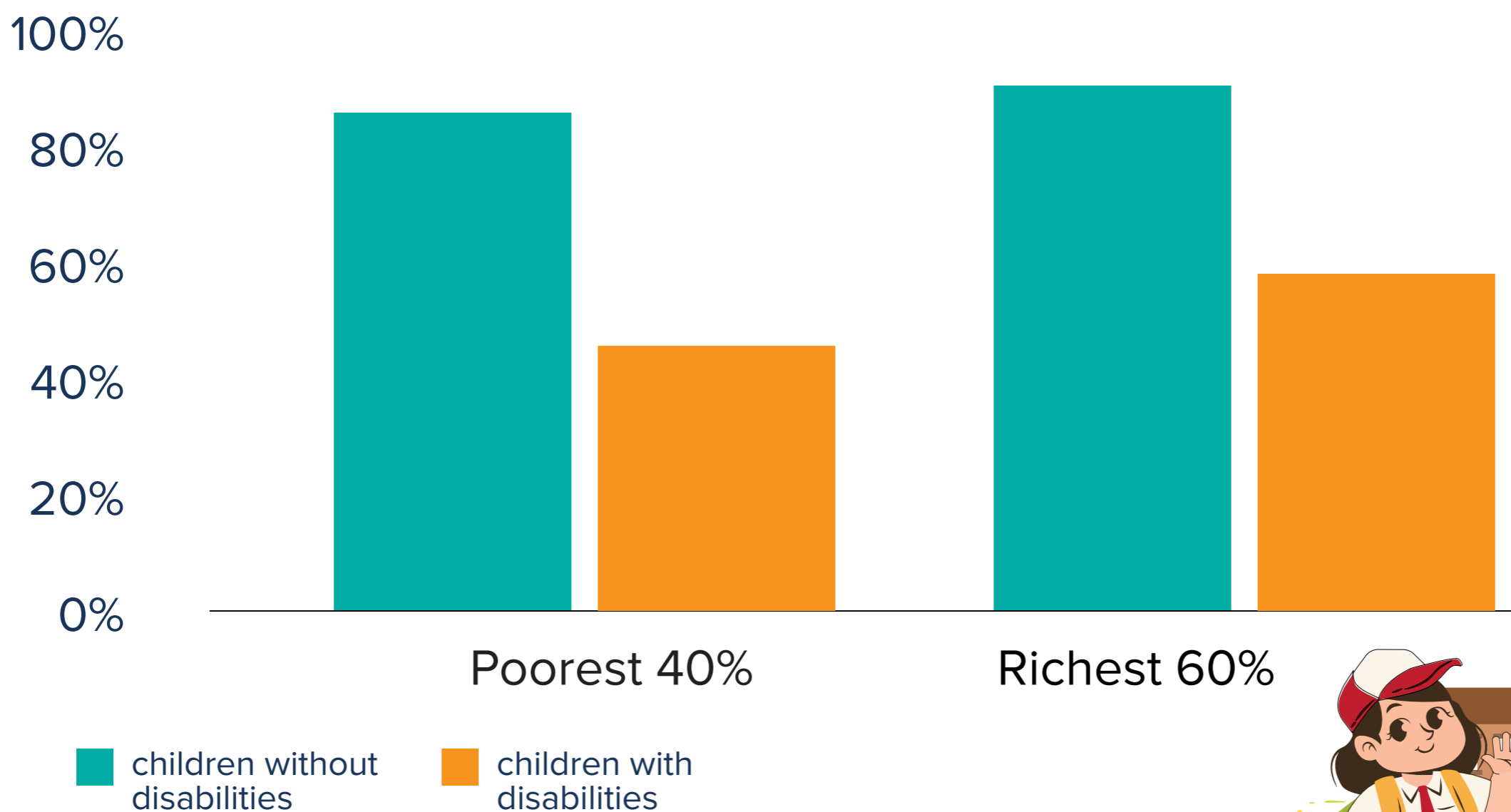
Nearly **20%**
of people with disabilities
have mobility difficulties and
vision impairment



EDUCATION ACCESS

Children with disabilities need more targeted educational support

School Participation Rate, Children with and without Disabilities (%)



Up to **35%** of children with disabilities have never received formal education

There are up to **205,000** children with disabilities in Indonesia and 2,329 special schools

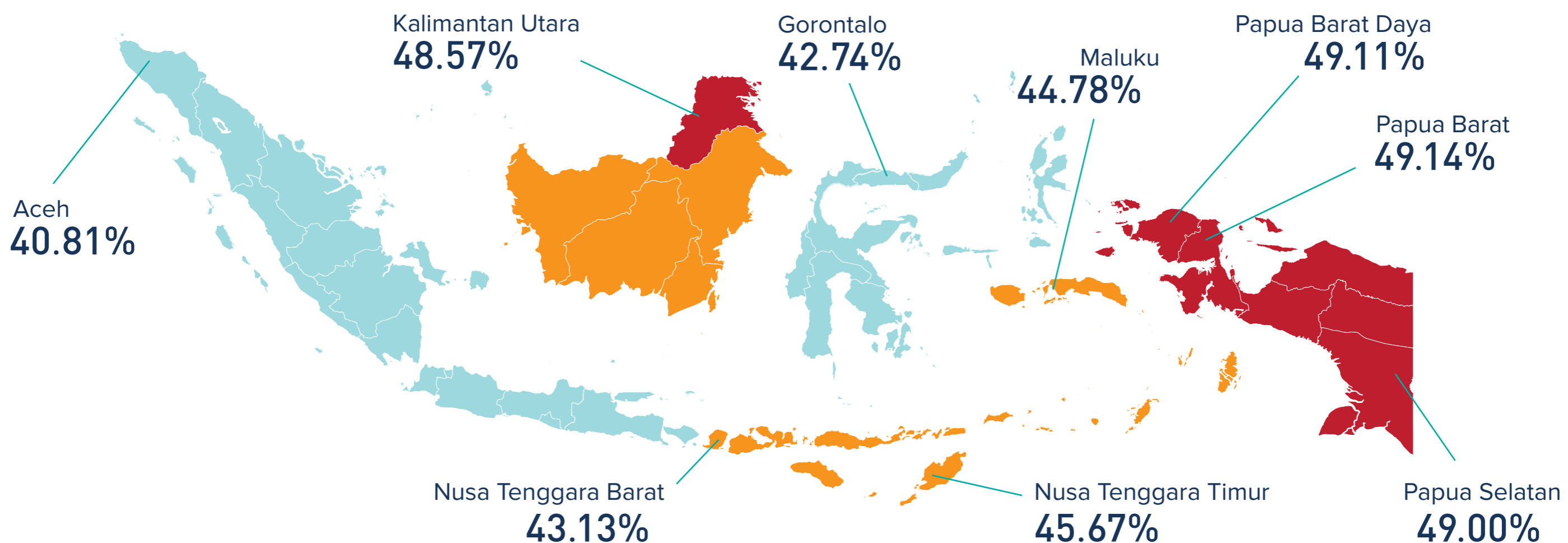
Poor children with disabilities are **2.82** times more likely to be **out of school** than children with disabilities from the wealthiest 10% of the population



ACCESS TO HEALTH SERVICES

Access to National Health Insurance will make people with disabilities less vulnerable

People with Disabilities without Health Insurance (%)



Sumatra
44.41%

Java
44.39%

Kalimantan
47.37%

Sulawesi
43.35%

Papua
49.32%

More than

55%

of people with disabilities without National Health Insurance (JKN) are women

50%

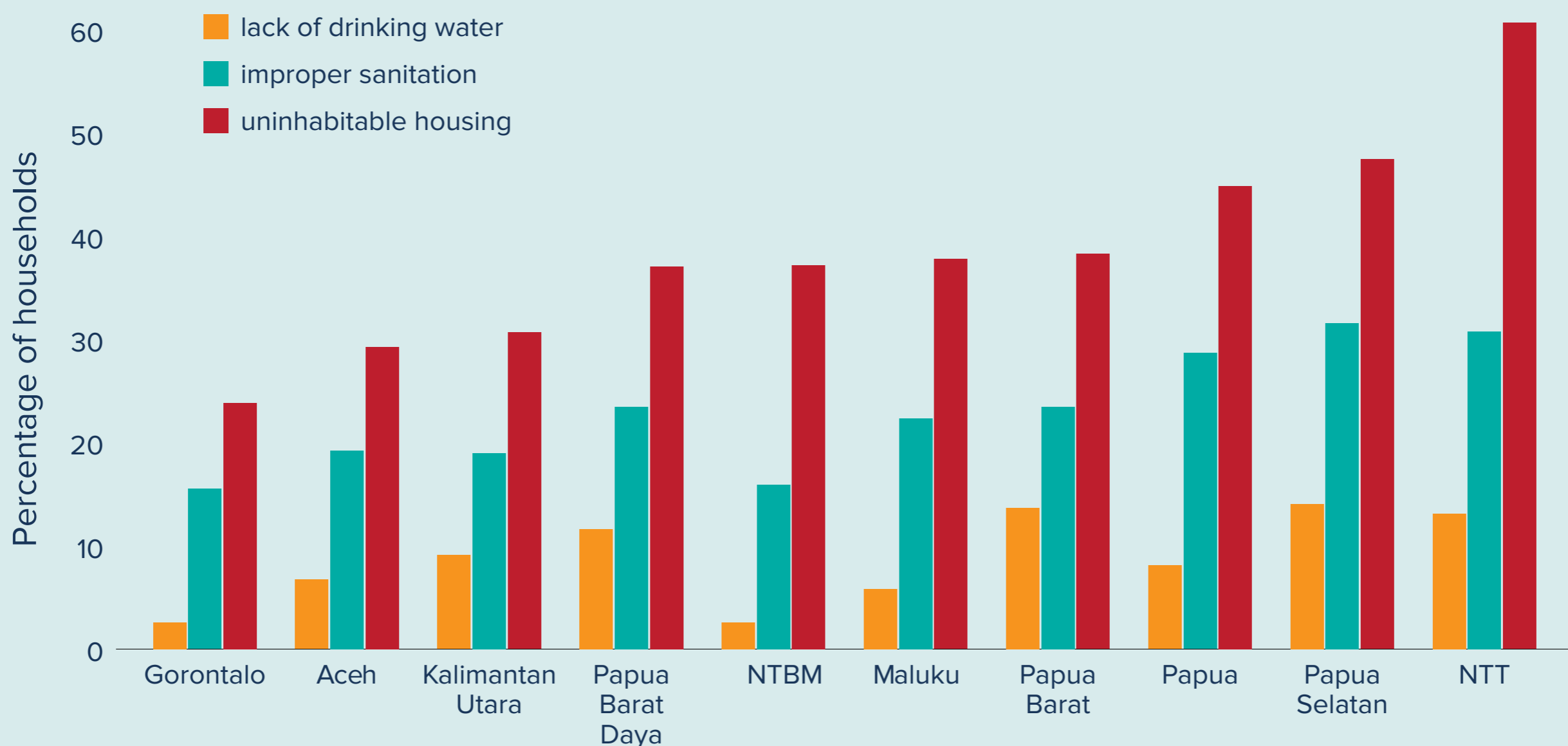
people with disabilities without JKN membership also have chronic diseases



ACCESS TO WATER, SANITATION AND HOUSING

Adequate access to quality infrastructure will improve the health and quality of life of people with disabilities and decrease their risk of disease

Households with People with Disabilities, Access to Water & Sanitation (%)



Overall, of households with people with disabilities:

Nearly
7%

lack access to
clean drinking
water

Up to
20%

do not have
proper
sanitation

Up to
36%

live in
substandard
housing

Up to
66%

in uninhabitable
housing are
amongst the
poorest 40%

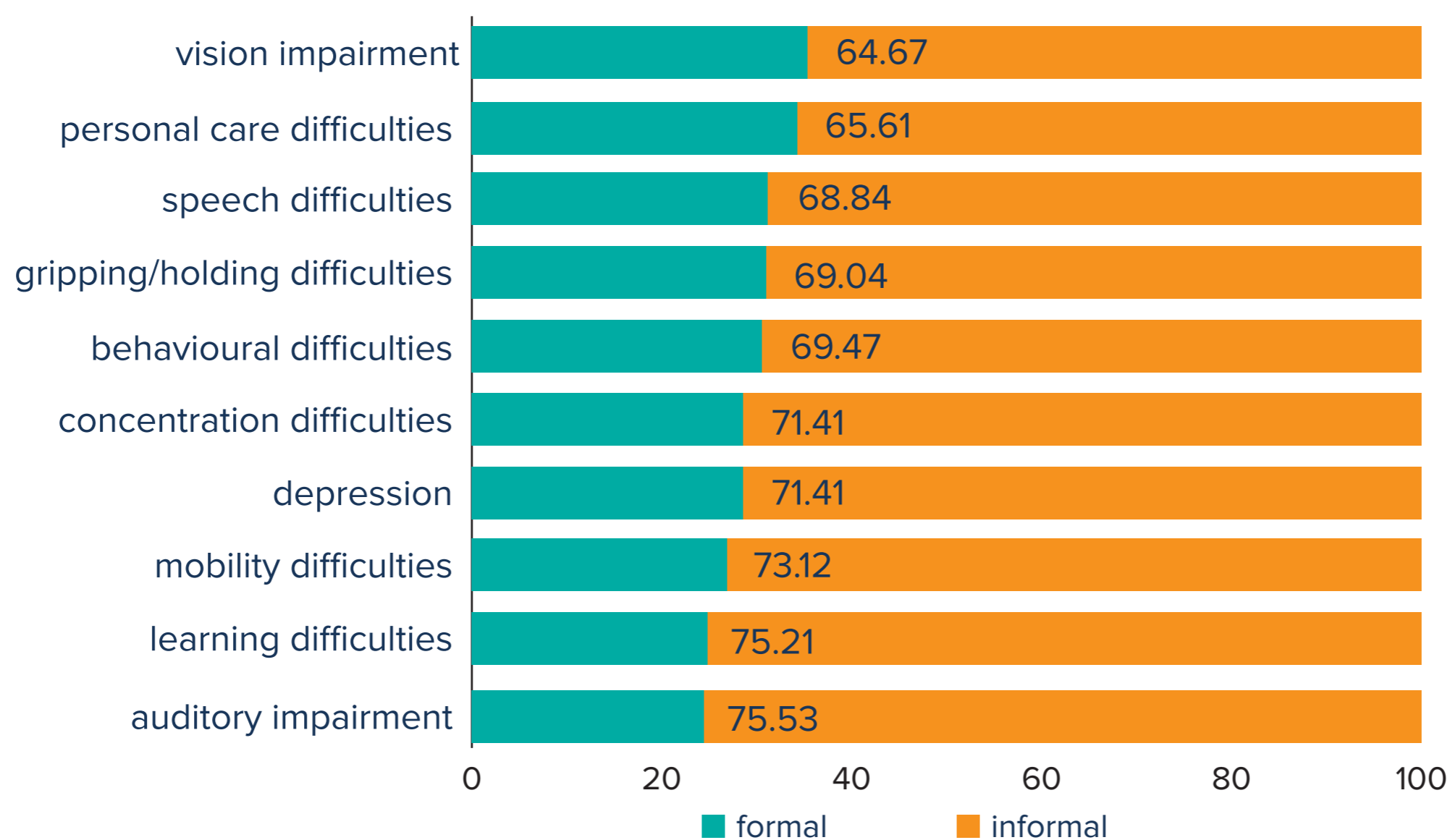




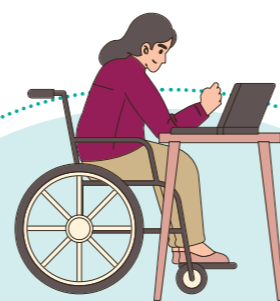
EMPLOYMENT AND ECONOMIC INCLUSION

Inclusive and gender-sensitive work environments expand equal opportunities for people with disabilities and minority groups, and pave the way for economic inclusion and universal social protection

Disability Type and Job Status (%)

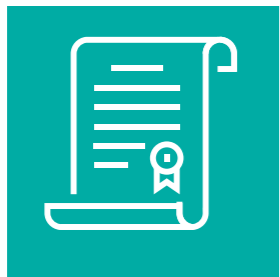


Nearly
70%
of people with
disabilities work
in the informal
sector



Only
1 in 5
women with
disabilities have
access to jobs

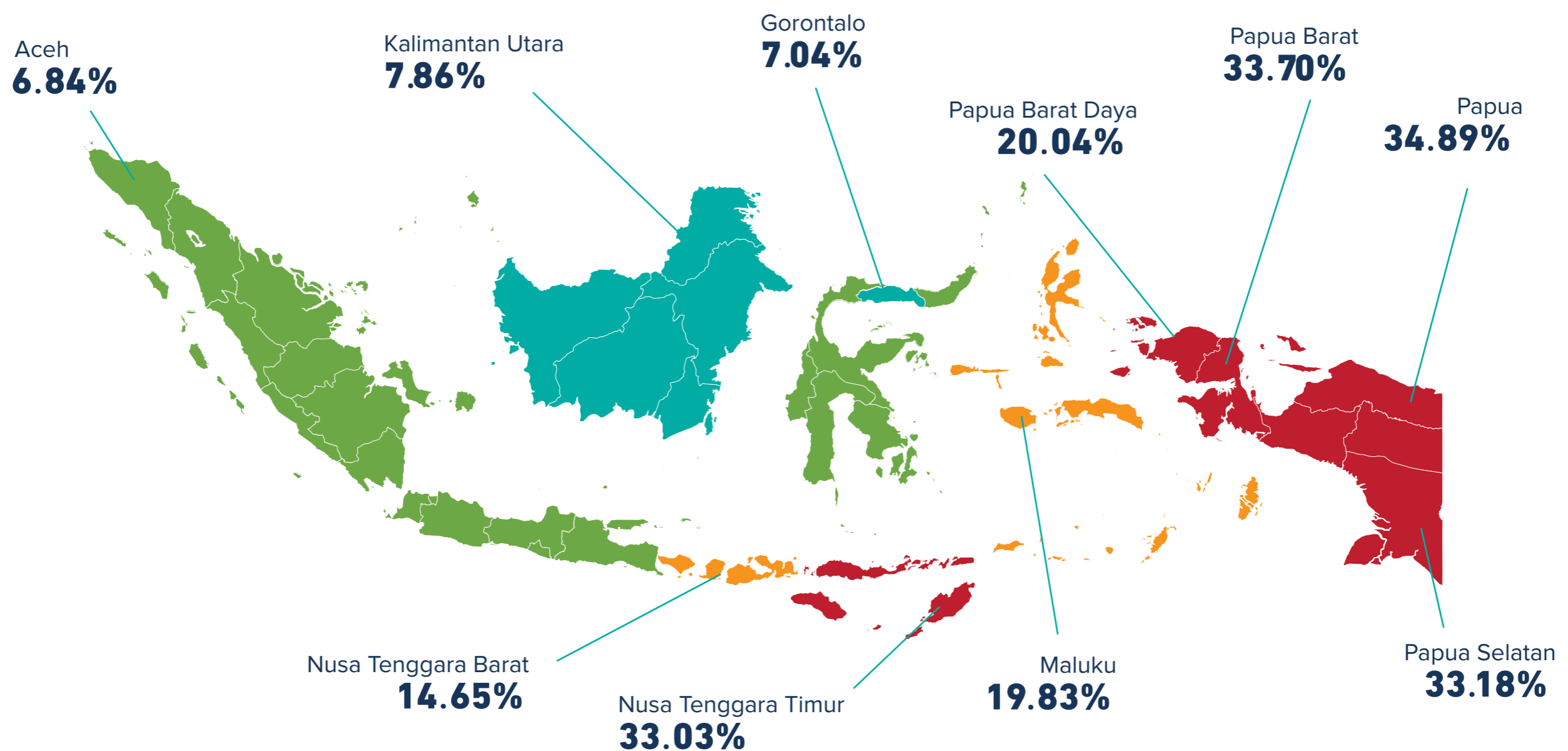
Nearly
57%
of people with
disabilities who own
businesses have
ultra-micro
businesses that earn
less than IDR 25
million/month



CIVIL REGISTRATION

Improving civil registration services can help people with disabilities obtain critical documents which will facilitate their access to basic services

Children with Disabilities without Birth Certificate (%)



Region	Percentage (%)
Sumatra	11.07%
Java	11.06%
Bali & Nusa Tenggara	22.25%
Kalimantan	13.10%
Sulawesi	10.92%
Papua	34.50%



2.41%

of people with disabilities don't have a National Identity Number (NIK)



12.45%

of children with disabilities aged 0-17 do not have birth certificates



BRIDGING GAPS FOR PEOPLE WITH DISABILITIES

The data reveals a need for targeted support to enhance access to education, healthcare, clean water, sanitation, and formal employment for people with disabilities in Indonesia. A special focus on addressing poverty and gender disparities is warranted. Robust civil registration services will ensure inclusion and access to basic services for people with disabilities.



All figures refer to people with moderate to severe disabilities. People with moderate to severe disabilities may experience challenges such as vision or hearing impairments even with aids, difficulties with movement or mobility, challenges in using their hands or fingers, learning or intellectual limitations, behavioural difficulties, speech or communication impairments, personal care needs, memory or concentration issues, and depressive disorders.