

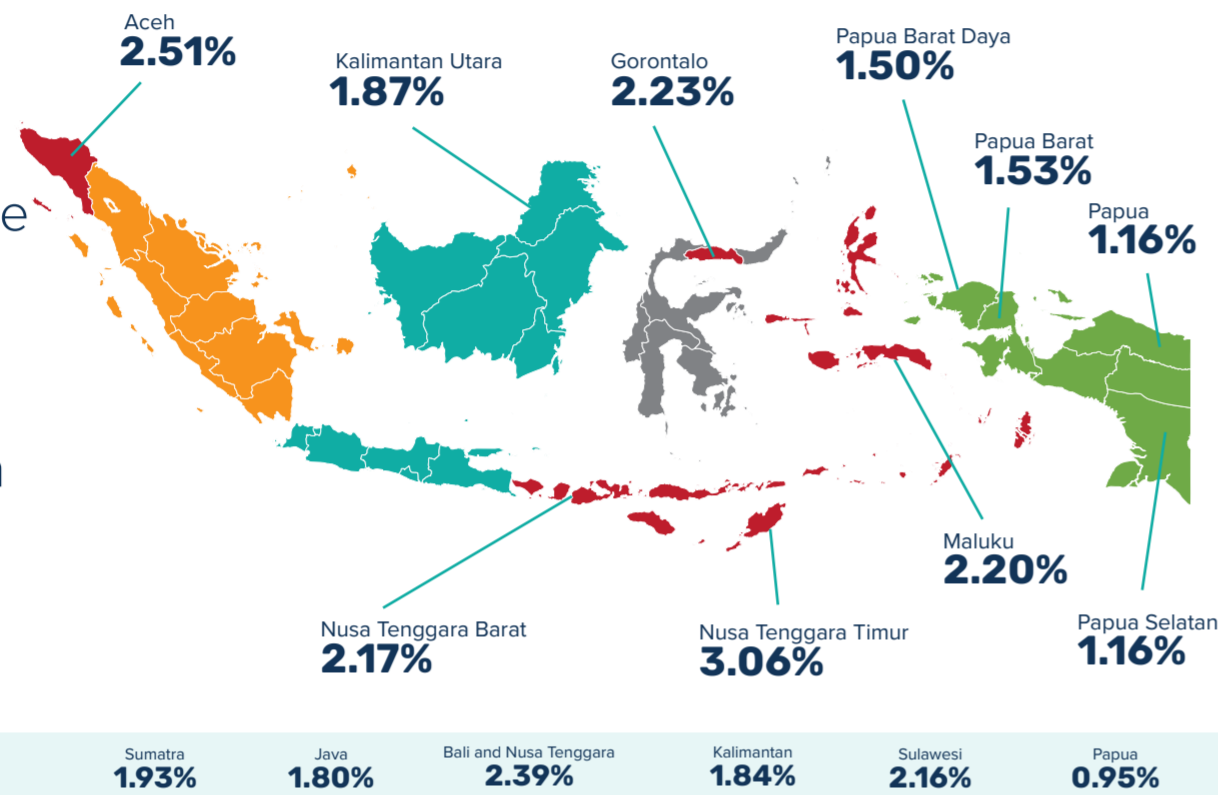
BASIC SERVICES FOR PEOPLE WITH DISABILITIES IN INDONESIA

Source: Regsosek 2022 processed using SEPAKAT in August, 2024



OVERVIEW

% of People with Disabilities as Part of the Population



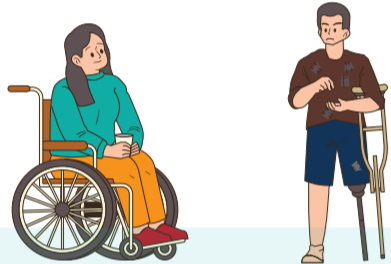
Nearly **5 million** Indonesians have disabilities

Nearly **55%** are women

Nearly **20%** of people with disabilities have mobility difficulties and vision impairment

Up to **20%** of people with disabilities are among the poorest 10% of the population

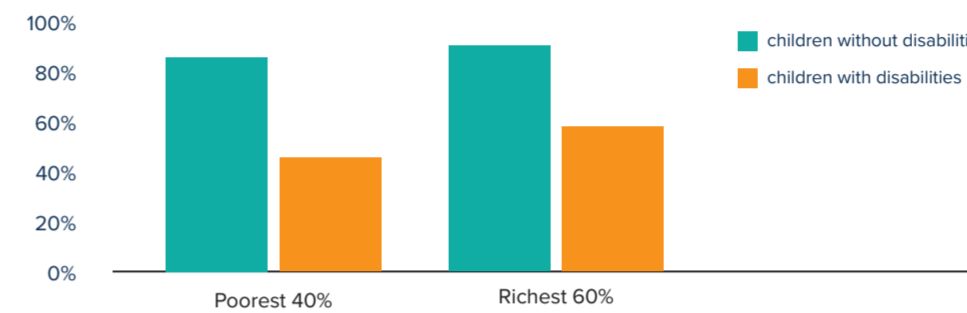
Indonesia has a significant population of people with disabilities, totaling 5 million—equivalent to the population of Oman



EDUCATION ACCESS

Children with disabilities need more targeted educational support

School Participation Rate, Children with and without Disabilities (%)



Up to **35%** of children with disabilities have never received formal education

There are up to **205,000** children with disabilities in Indonesia and 2,329 special schools

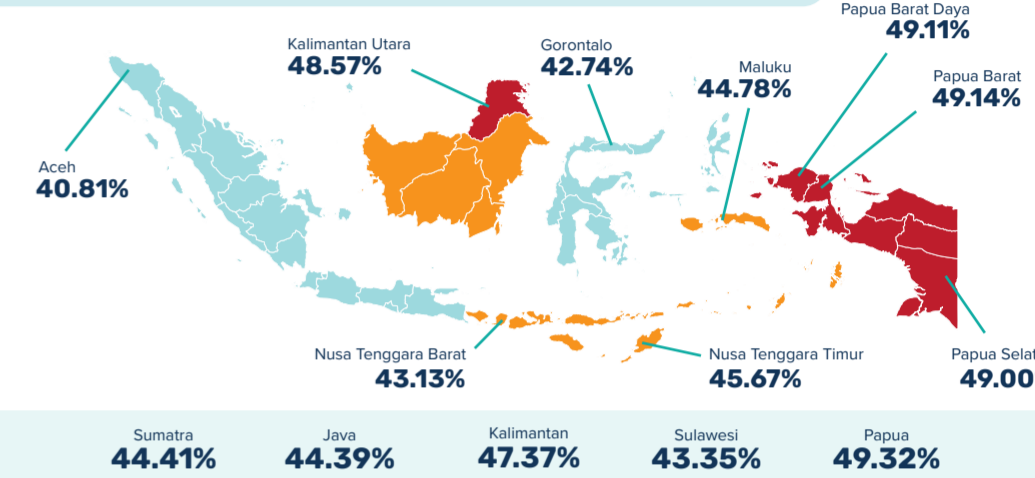
Poor children with disabilities are **2.82 times** more likely to be **out of school** than children with disabilities from the wealthiest 10% of the population



ACCESS TO HEALTH SERVICES

Access to National Health Insurance will make people with disabilities less vulnerable

People with Disabilities without Health Insurance (%)



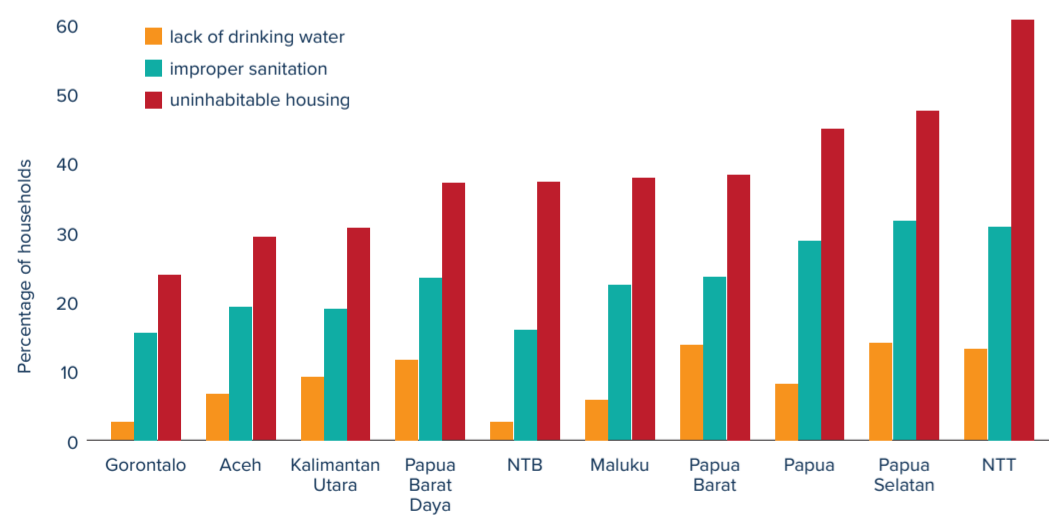
More than **55%** of people with disabilities without National Health Insurance (JKN) are women

50% people with disabilities without JKN membership also have chronic diseases

ACCESS TO WATER, SANITATION AND HOUSING

Adequate access to quality infrastructure will improve the health and quality of life of people with disabilities and decrease their risk of disease

Households with People with Disabilities, Access to Water & Sanitation (%)



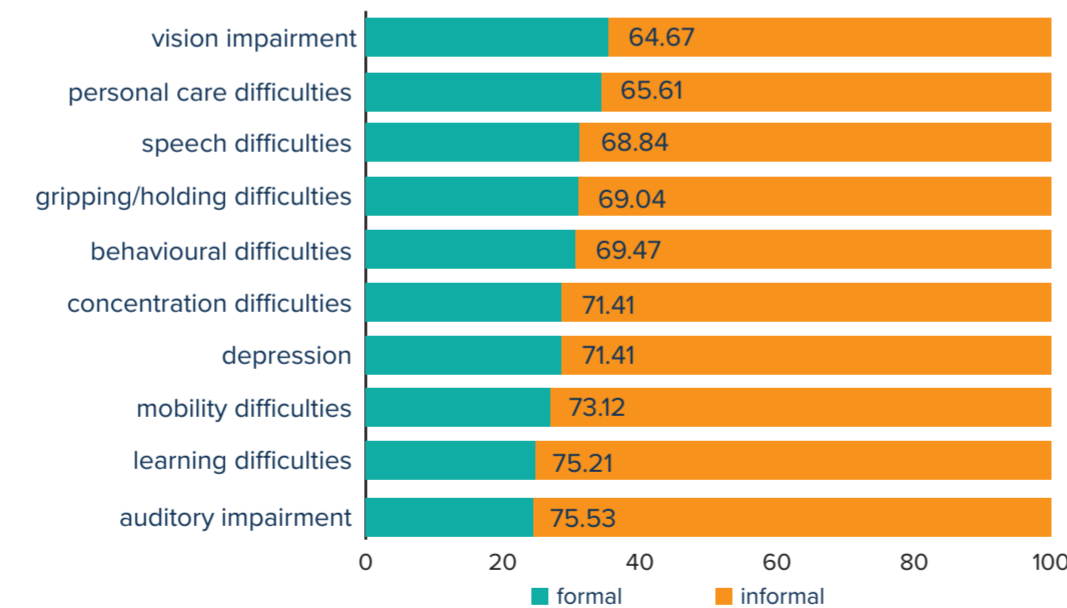
Overall, of households with people with disabilities:

- Nearly **7%** lack access to clean drinking water
- Up to **20%** do not have proper sanitation
- Up to **36%** live in substandard housing
- Up to **66%** in uninhabitable housing are amongst the poorest 40%

EMPLOYMENT AND ECONOMIC INCLUSION

Inclusive and gender-sensitive work environments expand equal opportunities for people with disabilities and minority groups, and pave the way for economic inclusion and universal social protection

Disability Type and Job Status (%)



Nearly **70%** of people with disabilities work in the informal sector

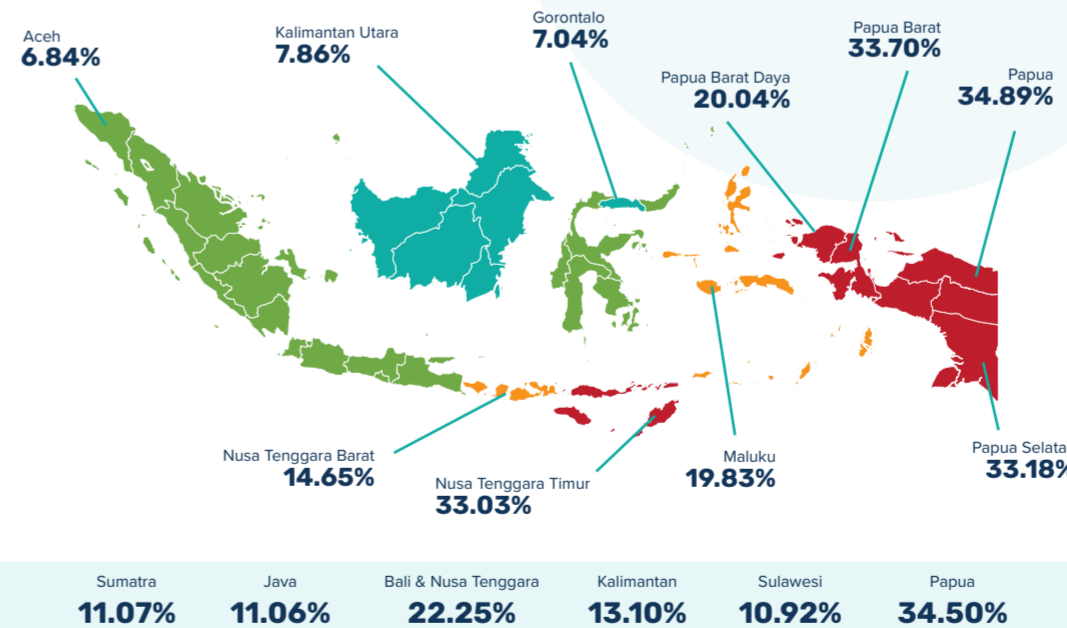
Only **1 in 5** women with disabilities have access to jobs

Nearly **57%** of people with disabilities who own businesses have ultra-micro businesses that earn less than IDR 25 million/month

CIVIL REGISTRATION

Improving civil registration services can help people with disabilities obtain critical documents which will facilitate their access to basic services

Children with Disabilities without Birth Certificate (%)



2.41% of people with disabilities don't have a National Identity Number (NIK)

12.45% of children with disabilities aged 0-17 do not have birth certificates

BRIDGING GAPS FOR PEOPLE WITH DISABILITIES

The data reveals a need for targeted support to enhance access to education, healthcare, clean water, sanitation, and formal employment for people with disabilities in Indonesia. A special focus on addressing poverty and gender disparities is warranted. Robust civil registration services will ensure inclusion and access to basic services for people with disabilities.



All figures refer to people with moderate to severe disabilities. People with moderate to severe disabilities may experience challenges such as vision or hearing impairments even with aids, difficulties with movement or mobility, challenges in using their hands or fingers, learning or intellectual limitations, behavioural difficulties, speech or communication impairments, personal care needs, memory or concentration issues, and depressive disorders.